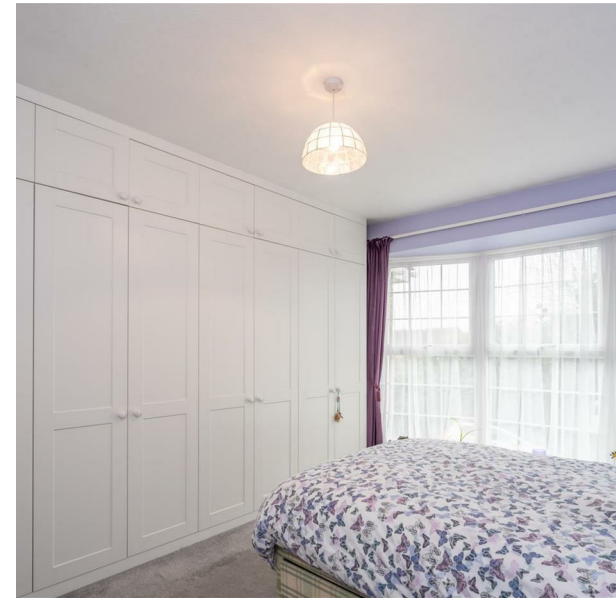


5 Grassmere Close, Felpham, Bognor Regis, West Sussex, PO22 7NU

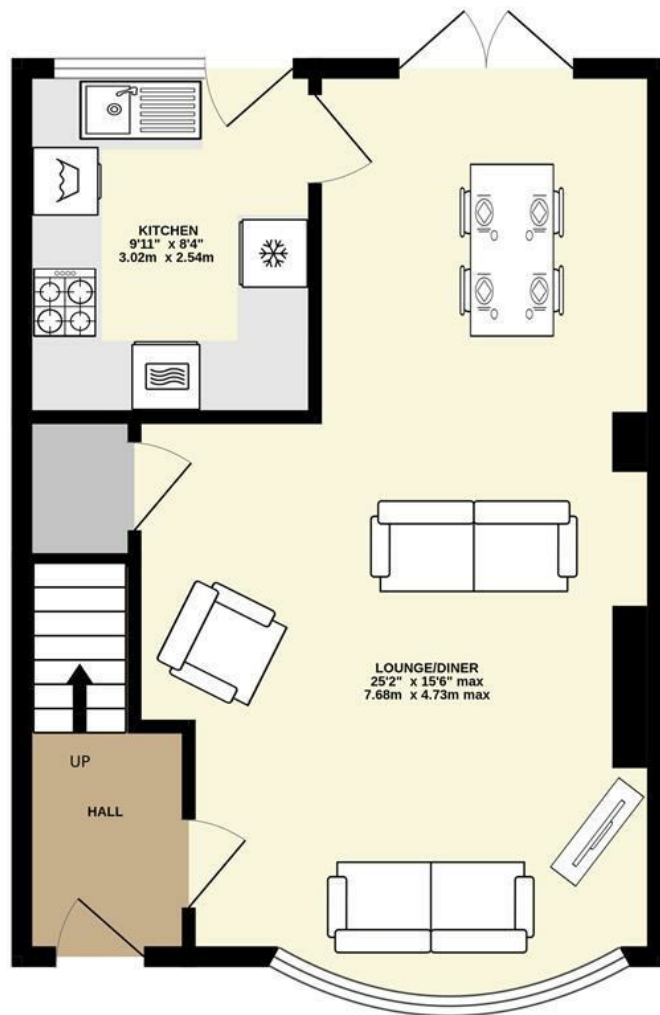
£350,000

Freehold

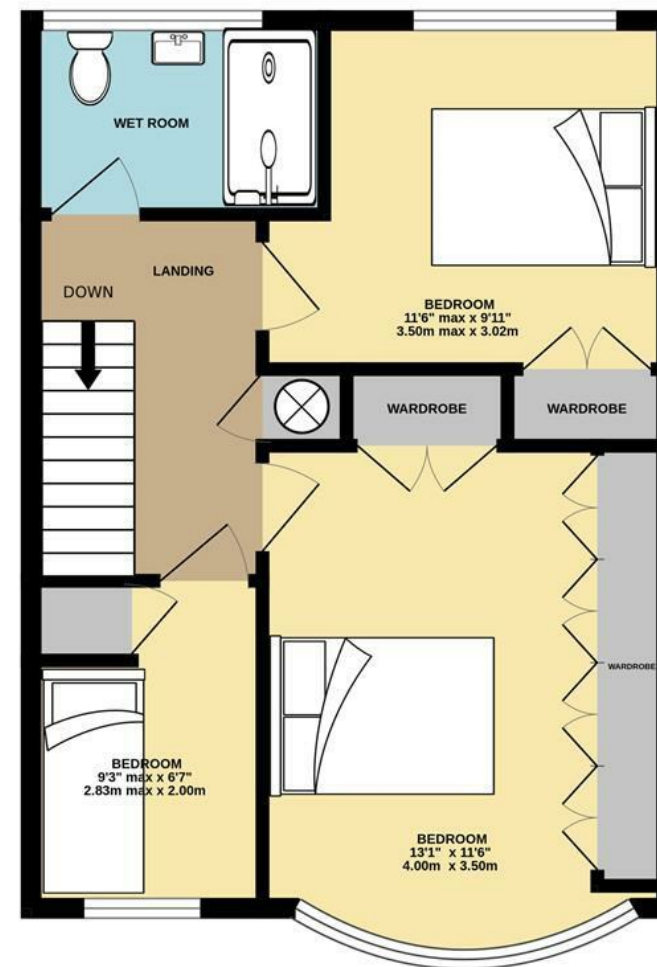
FARNDALL
ESTATE AGENTS



GROUND FLOOR
464 sq.ft. (43.1 sq.m.) approx.



1ST FLOOR
464 sq.ft. (43.1 sq.m.) approx.



TOTAL FLOOR AREA : 928 sq.ft. (86.2 sq.m.) approx.

Whilst every attempt has been made to ensure the accuracy of the floorplan contained here, measurements of doors, windows, rooms and any other items are approximate and no responsibility is taken for any error, omission or mis-statement. This plan is for illustrative purposes only and should be used as such by any prospective purchaser. The services, systems and appliances shown have not been tested and no guarantee as to their operability or efficiency can be given.
Made with Metropix ©2025



- Terraced Family House
- Large Lounge/Diner
- Modern Kitchen
- 3 Bedrooms (2 Doubles and 1 Single)
- Modern Wet Room
- uPVC Double Glazing and Gas Central Heating
- Low-Maintenance Front and Rear Gardens
- Garage in adjacent compound
- Superb Location in the heart of Felpham Village

The Following information has been provided by the seller. We Would advise that you ask your solicitor to verify this information during the course of your purchase:

COUNCIL TAX BAND D

LOCAL AUTHORITY
Arun District Council, Arun Civic Centre,
Maltravers Road, Littlehampton,
West Sussex, BN17 5LF
Tel: 01903 737500





FARNDSELL

ESTATE AGENTS

79 Aldwick Road

Bognor Regis

West Sussex

PO21 2NW

01243 869991

sales@farndells.com

<http://www.farndells.com>

Energy Efficiency Rating

	Current	Potential
Very energy efficient - lower running costs		
(92 plus) A		
(81-91) B		87
(69-80) C	74	
(55-68) D		
(39-54) E		
(21-38) F		
(1-20) G		
Not energy efficient - higher running costs		

England & Wales

EU Directive
2002/91/EC



Council Tax Band D